

LOWER BREEDE RIVER CONSERVANCY TRUST



Annual Information Meeting
Malagas
16 April 2022

Meeting format & protocols



- There will be five main presentations by different presenters.
- Due to limited time, questions should please be held over until all presentations are completed.
- Any questions remaining unasked or unanswered at closing should be sent to

info@breede-river.org.

Meeting topics



Part 1 (*Peter Müller*)

- Reminder of our mission and purpose
- What we do for you and the estuary
- Quick review of 2021 and 2022 year-to-date
- Current Threats to sustainability of a healthy estuary

Part 2

- Financial Report

Part 3 (*Andrew Crawford*)

- Update on BREAF and the EMP

Meeting topics *...continued*



Part 4 *(Jason Oxley)*

- Monitoring & Compliance:
 - Boating and fishing
 - Land disturbance
 - Public Launch Sites

Part 5 *(Jason Oxley)*

- Conservation activities and challenges
- Environmental Education and communication

Questions and closing

Highlights ... and ... Lowlights



Highlights

- + Maintained good relationship with authorities
- + Tripartite Service Level Agreement with Hessequa and Swellendam Municipalities renewed to 30 June 2024
- + Rainfall patterns improved dam levels and freshwater inflow
- + Improved MLRA compliance (DFFE operations)
- + New Trustee appointments
- + Boat upgrades
- + New website
- + Newsletter overhaul
- + SAMSA Aids to Navigation project
- + SANHO bathymetry (riverbed mapping) project



Highlights and Lowlights ...contd.

Lowlights

- Boating behaviour has worsened
- Decreasing cooperation by public (illegal dumping, development etc., habitat destruction etc.)
- Lack of capital for fleet replacement
- Human Resources (staff) challenges
- Covid-19 disruption



What is the LBRCT

- It is a Trust, registered in 2000, and is a NPO / PBO.
- Currently seven Trustees, all with Letters of Authority from the Masters Office.
- Trust operates in terms of an SLA with the two Municipalities
- Field operations are managed by a Supervisor.
- Oversight by a Management Committee and the Trustees, who are volunteers and receive no financial compensation whatsoever.
- Staffed by (paid):
 - 1 Senior Ranger/Supervisor
 - 2 full-time Rangers
 - 2 part-time Rangers
 - 3 student assistants for public launch site monitoring
 - 1 office Administrator

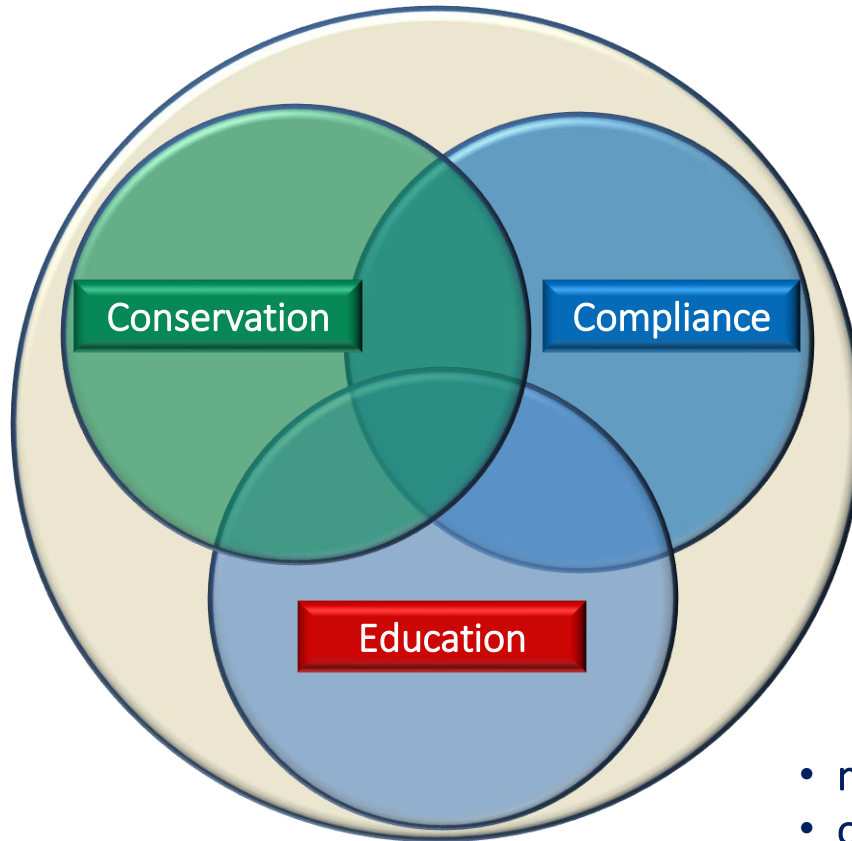
Our Mission



The mission of the LBRCT is to conserve and protect, in a sustainable manner, the natural resources and living species in the biologically and ecologically sensitive Breede River Estuary and its adjoining land areas, and also to promote safe and lawful recreational use.



LBRCT functions



- monitoring
- observation
- reporting
- transfer of knowledge

Board of Trustees



Retired

- Rupert Bellairs
- Trevenen Barry

Current

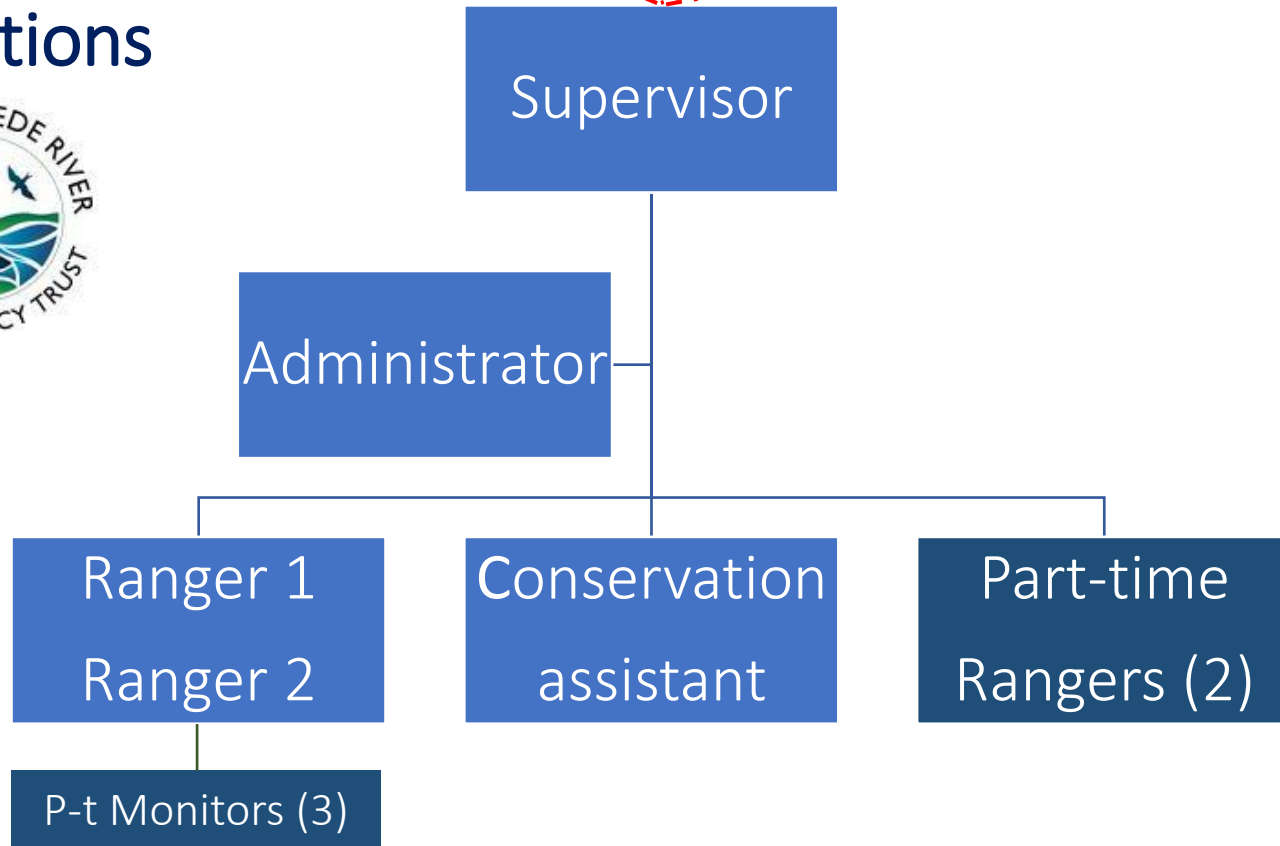
- Lester Coelen
- Neil McMurray
- Peter Müller
- Geoff Brownell *
- Giles Buswell *
- Andrew Crawford *
- David Rogers *

* *new appointments*

Trustees

Brownell	Buswell	Coelen	Crawford	McMurray	Müller	Rogers
Business	Legal	Treasurer	HR	Deputy Treasurer	Govt. & Municipal	Comms.

Operations





Real threats to sustainability of a healthy estuary

- Freshwater flow reduction (droughts, agriculture, commercial and domestic use)
- Sedimentation (poor farming practices upstream, boat wakes and serious floods)
- Pollution (sewerage, fertilizer, chemicals, plastics, run-off and industrial/agricultural discharges etc.)
- Over-fishing and excess bait collection
- Habitat destruction
- Boating pressure

Some of the above are beyond the authorities' control, but every effort should be made to ensure compliance with those that are within it.



Reckless breaches of environmental regulations

- Unapproved property development and construction
- Unauthorized excavation and earth moving
- Indiscriminate and unauthorised reed cutting
- Dumping of above into estuary = prosecutable offence
- Bait bed plundering
- Salt marsh trampling

All of the above are within the authorities' control and are prosecutable offences, some of which carry fines of up to R500 000.



... but our hands are tied

Marine Living Resources Act

- Lack of enforcement of MLRA due to non-authorisation of qualified FCO's
- DFFE refuse to appoint NGO staff as full FCO's

National Environmental Management Act

- Powers and authorities are held by DEA&DP – but capacity constraints (manpower and funding)
- Absence of regulations governing indiscriminate and unauthorised reed cutting and bank stabilization
- Slow response to complaints filed

Estuarine Eco Health Index



Category	Health Index Description
A (91 - 100)	Unmodified / natural
B (76 -90)	Largely natural / few modifications
C (61 75)	Moderately modified
D (41 60)	Largely modified
E (21-40)	Highly modified
F (0 - 20)	Critically/extremely modified

Estuary	Health Score %	Category*
Breede	78	B/C (B)
Berg	64	C (C)
Duiwenhoks	72	C (B)
Goukou	69	C (B)
Gouritz	61	C (B)
Zeekoevlei	26	E (E)

Bracketed Category* = desired & attainable state



Financials



Lower Breede River Conservancy Trust

11-Nov-21

Receipts and Expenditure Account

For the year ended 30 June 2021

Details	June 2021	June 2020
Receipts		
Boat Licences - Net	1 002 282	855 263
Municipality Grants		
Hessequa	330 000	330 000
Swellendam	350 000	343 125
Net Interest Received	20 399	45 392
Other Receipts - Donations	1 688	5 896
	<u>1 704 369</u>	<u>1 579 676</u>



Lower Breede River Conservancy Trust

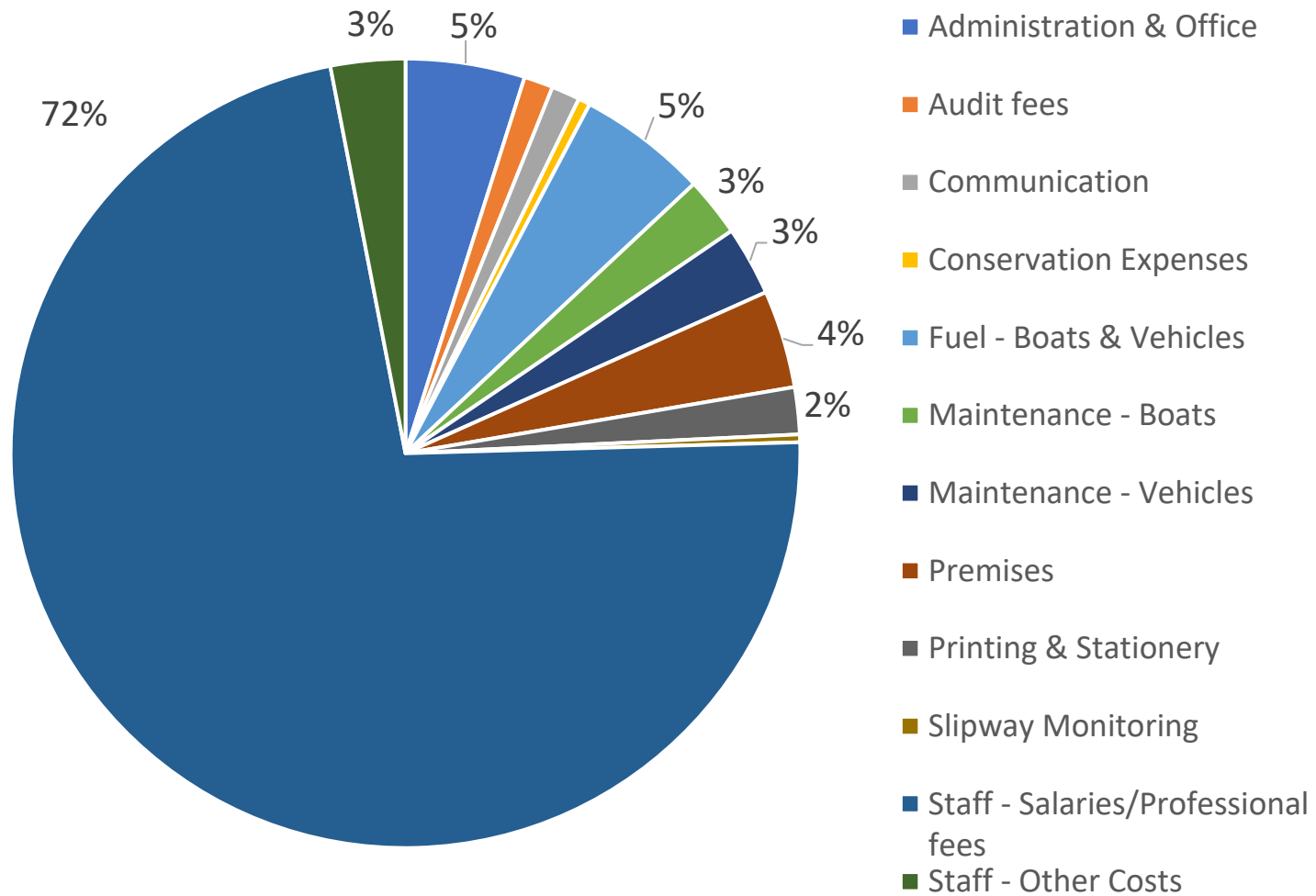
11-Nov-21

Receipts and Expenditure Account

For the year ended 30 June 2021

Details	June 2021	June 2020
Expenditure		
Administration & Office	86 695	92 873
Audit fees	21 170	22 180
Communication	20 716	16 370
Conservation Expenses	8 641	33 743
Fuel - Boats & Vehicles	94 285	95 354
Maintenance - Boats	43 145	33 011
Maintenance - Vehicles	50 404	41 110
Premises	71 099	105 683
Printing & Stationery	34 165	26 196
Slipway Monitoring	5 640	87 279
Staff - Salaries/Professional fees	1 285 400	1 325 354
Staff - Other Costs	54 206	75 120
	1 775 566	1 954 272
Capital Expenditure - W/off	14 113	175 752
	1 789 679	2 130 024
(Deficit) for Year	(85 310)	(550 348)

Expenditure by type – y/e June 2021





Lower Breede River Conservancy Trust

11-Nov-21

Balance Sheet

As at 30 June 2021

Details	June 2021	June 2020
Fixed Assets	2	2
Current Assets	233 390	318 059
Cash in Banks and on Hand	592 151	647 303
Less Funds held In Trust-		
Friends of the Lower Breede River conservancy Trust	(385 831)	(363 789)
	206 320	283 514
Accounts Receivable	27 070	34 545
	233 392	318 061
Less Current Liabilities	(79 050)	(78 409)
	154 342	239 652
Represented by -		
Accumulated Fund	154 342	239 652